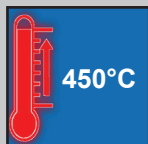


# Heating mantle | beaker

for beaker, integrated controller, up to 450°C



## WHM for beaker, 450°C integrated controller

### Ideal for:

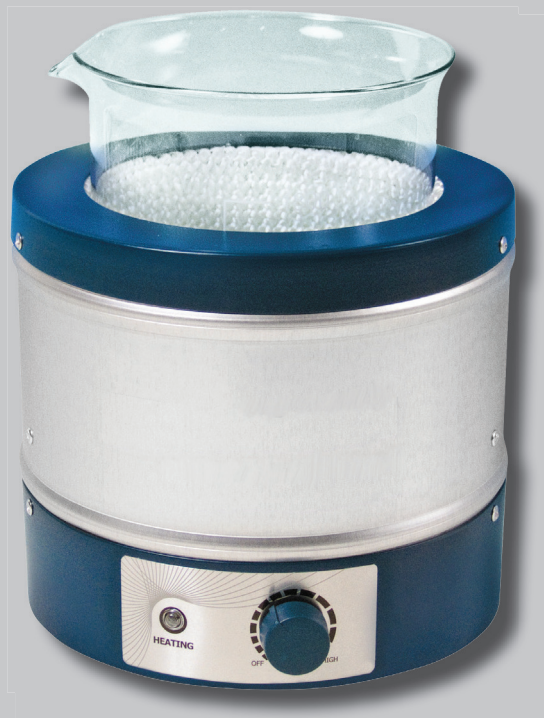
- for beaker 100 - 5,000 ml

### Features:

- 100°C - 450°C
- full choice of vessel, capacity, housing and control are offered
- nickel chrome heating element
- coil type: acid-resistant, long life time
- all kinds of beaker can be used (Duran®/Kimax/Pyrex/Iwaki)
- CE certified and unique serial number for tracing

### Controller:

- built-in *temperature controller*



1.000 ml beaker heating mantle

Application (beaker brand)	Beaker capacity (ml)	Beaker Ø (mm)	Watts (W)	Inside depth (mm)	Mantle outside Ø x H mm	Support rod Ø x H mm	Order number
							with 230V
common-use	100	50 - 52	80	40	Ø 145 x 105	Ø 13 x 440	DH.WHM12141
common-use	250	68 - 70	140	65	Ø 145 x 140	Ø 13 x 440	DH.WHM12142
for DU.	400	79 - 81	240	70	Ø 145 x 140	Ø 13 x 440	DH.WHM12143
for Iw./Ki./Py.	400	76 - 78	240	75	Ø 145 x 140	Ø 13 x 440	DH.WHM121431
common-use	600	88 - 90	240	75	Ø 145 x 140	Ø 13 x 440	DH.WHM12144
common-use	800	98 - 100	300	90	Ø 190 x 165	Ø 13 x 440	DH.WHM12145
common-use	1,000	105 - 108	350	90	Ø 190 x 165	Ø 13 x 440	DH.WHM12146
common-use	2,000	130 - 132	450	125	Ø 190 x 180	Ø 13 x 660	DH.WHM12147
for DU./Iw.	3,000	151 - 153	550	160	Ø 270 x 235	Ø 13 x 660	DH.WHM12148
for Ki./Py.	4,000	160 - 162	700	160	Ø 270 x 235	Ø 13 x 660	DH.WHM121481
for DU.	5,000	169 - 171	800	160	Ø 270 x 235	Ø 13 x 660	DH.WHM12149

Remarks: DU. = Duran®, Ki. = Kimax, Iw. = Iwaki, Py. = Pyrex

# Heating mantle | beaker

for beaker, integrated magnetic stirrer and controller, up to 450°C



## WHM for beaker, 100°C - 450°C

with built-in magnetic stirrer  
integrated controller

### Ideal for:

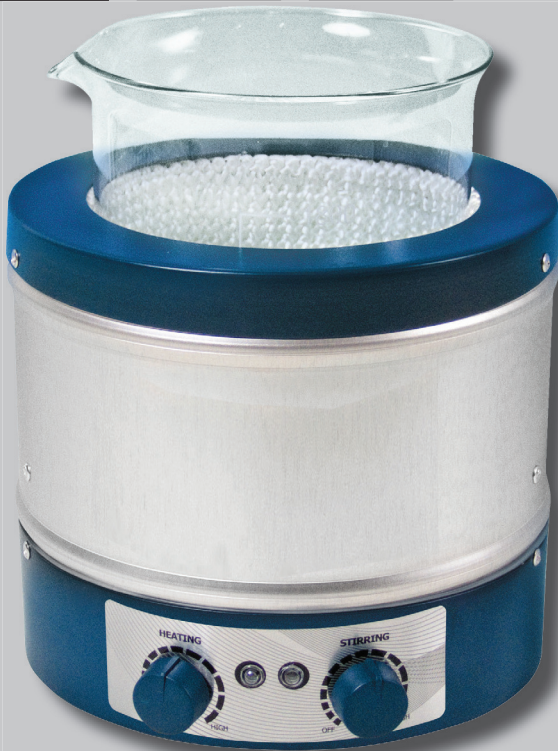
- for beaker 100 - 5,000 ml

### Features:

- built-in stirring and temperature controller
- 50 ~ 750 rpm
- full choice of vessel, capacity, housing and control are offered
- nickel chrome heating element
- coil type: acid-resistant, long life time
- all kinds of beaker can be used (Duran®/Kimax/Pyrex/Iwaki)
- CE certified and unique serial number for tracing

### Controller:

- built-in *stirring & temperature controller*



1.000 ml beaker heating mantle



2x stirrer bars included

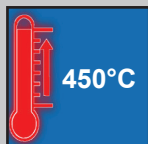
Application (beaker brand)	Beaker capacity (ml)	Beaker Ø (mm)	Watts (W)	Inside depth (mm)	Mantle outside Ø x H mm	Support rod Ø x H mm	Order number
							with 230V
common-use	100	50 - 52	80	45	Ø 145 x 140	Ø 13 x 440	<b>DH.WHM121601</b>
common-use	250	68 - 70	140	70	Ø 190 x 165	Ø 13 x 440	<b>DH.WHM121602</b>
for DU.	400	79 - 81	240	70	Ø 190 x 165	Ø 13 x 440	<b>DH.WHM121603</b>
for Iw./Ki./Py.	400	76 - 78	240	70	Ø 190 x 165	Ø 13 x 440	<b>DH.WHM121604</b>
common-use	600	88 - 90	240	72	Ø 190 x 165	Ø 13 x 440	<b>DH.WHM121605</b>
common-use	1,000	105 - 108	350	90	Ø 190 x 200	Ø 13 x 440	<b>DH.WHM121606</b>
common-use	2,000	130 - 132	450	140	Ø 270 x 235	Ø 13 x 660	<b>DH.WHM121607</b>
for DU./Iw.	3,000	151 - 153	550	140	Ø 270 x 235	Ø 13 x 660	<b>DH.WHM121608</b>
for Ki./Py.	4,000	160 - 162	700	170	Ø 325 x 270	Ø 13 x 660	<b>DH.WHM121609</b>
for DU.	5,000	169 - 171	800	170	Ø 325 x 270	Ø 13 x 660	<b>DH.WHM121610</b>

Remarks: DU. = Duran®, Ki. = Kimax, Iw. = Iwaki, Py. = Pyrex

Accessories: Magnetic stirrer bars can be found on page 28

# Heating mantle | beaker

for beaker, external controller available, up to 450°C



## WHM for beaker, 450°C for use with external controller

### Ideal for:

- for beaker 100 - 5,000 ml and use with magnetic stirrer

### Features:

- highly processed aluminium case offers robust standing, easy handling and usability on the magnetic stirrer
- k-type thermo sensor is basically embedded
- nickel chrome heating element
- coil type: acid-resistant, long life time
- CE certified and unique serial number for tracing

### Controller:

- optional remote thermo controllers are available (analog: WHM-C10A, digital: WHM-C10D)



600 ml beaker heating mantle



WHM-C10D  
digital controller



WHM-C10A  
analog controller

Application (beaker brand)	Beaker capacity (ml)	Beaker Ø (mm)	Watts (W)	Inside depth (mm)	Mantle outside Ø x H mm	Support rod Ø x H mm	Order number
							with 230V
common-use	100	50 - 52	80	50	Ø 145 x 75	Ø 13 x 440	DH.WHM12170
common-use	250	68 - 70	140	50	Ø 145 x 75	Ø 13 x 440	DH.WHM12171
for DU.	400	79 - 81	240	85	Ø 145 x 110	Ø 13 x 440	DH.WHM12172
for lw./Ki./Py.	400	76 - 78	240	85	Ø 145 x 110	Ø 13 x 440	DH.WHM121721
common-use	600	88 - 90	240	85	Ø 145 x 110	Ø 13 x 440	DH.WHM12173
common-use	800	98 - 100	300	90	Ø 190 x 190	Ø 13 x 440	DH.WHM12174
common-use	1,000	105 - 108	350	115	Ø 190 x 165	Ø 13 x 440	DH.WHM12175
common-use	2,000	130 - 132	450	140	Ø 190 x 160	Ø 13 x 660	DH.WHM12176
for DU./lw.	3,000	151 - 153	550	175	Ø 270 x 200	Ø 13 x 660	DH.WHM12177
for Ki./Py.	4,000	160 - 162	700	175	Ø 270 x 200	Ø 13 x 660	DH.WHM12178
for DU.	5,000	169 - 171	800	175	Ø 270 x 200	Ø 13 x 660	DH.WHM12179
for DU.	10,000 *	216 - 219	1400	245	Ø 325 x 270	Ø 13 x 660	DH.WHM121791

\* 10,000 ml mantle steel case - magnetic stirring is not available  
Remarks: DU. = Duran®, Ki. = Kimax, lw. = lwaki, Py. = Pyrex

Accessories: Remote controller and temperature probes on page 46